



An impressive, wide, low-built, Freehold seven bedroom house measuring over 4,000 sq ft with passenger lift, two reception room rooms, dining room, kitchen/ breakfast room, utility room, cloakroom, south-facing garden, roof terrace and garage.

This wonderful family home has a grand central staircase and excellent natural light throughout. There is a separate entrance on the lower ground floor and access to large external storage vaults. There is also a garage in the secure gated mews behind the house.

Houses on Southwick Place rarely come to the market and this house has an unparalleled position due to its long view. It is also moments away from Hyde Park as well as the shopping destination of Connaught Street and all the world class amenities of London's West End.

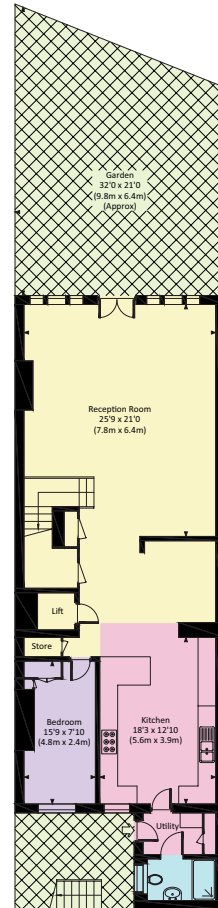
- 7 Bedrooms
- 4 Bathrooms
- 2 Reception Rooms
- Dining Room
- Large kitchen
- Patio Garden
- Roof terrace
- Lift
- Guest Cloakroom
- Utility area
- Private, lock up garage
- Price on Application



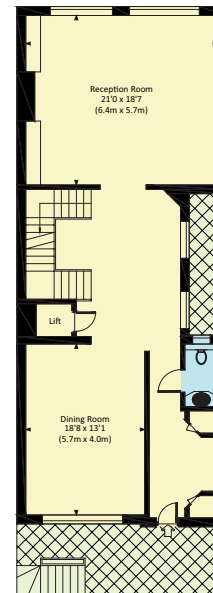


SOUTHWICK PLACE, W2

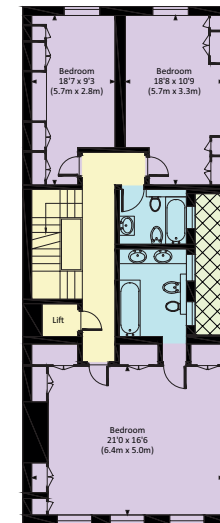
Approx. gross internal area
4045 Sq.Ft. / 375.8 Sq.M



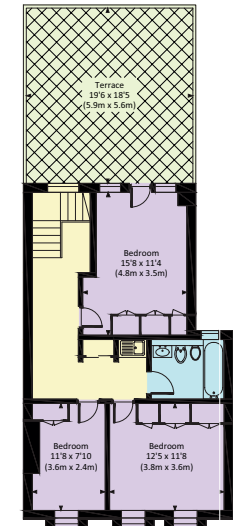
LOWER GROUND FLOOR



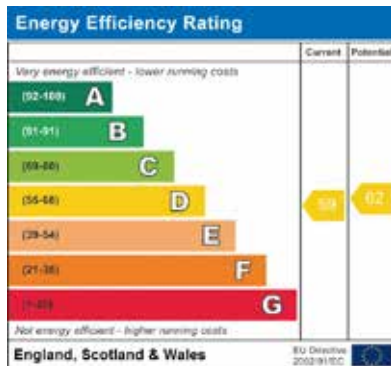
GROUND FLOOR



FIRST FLOOR



SECOND FLOOR



Borough: City of Westminster

Under the Property Misdescriptions Act these particulars are intended as a guide and act as information only. They give a fair overall description for the guidance of potential purchasers or tenants but do not constitute an offer or part of a contract. All details and approximate measurements are given in good faith and are believed to be correct at the time of printing, but any potential purchasers or tenants should not rely on them as statements or representations of fact but must satisfy themselves by inspection or otherwise as to their correctness. Photography, floor plan and brochure design by Dowling Jones Design © 2021

tel +44 20 7183 0762

hello@swresidential.co.uk

www.swresidential.co.uk

3rd Floor, 193-195 Brompton Road

London SW3 1LZ